

# 2019 2020 CATALOGUE

 **AURORA**

- kitchen appliances
- home appliances
- health & beauty
- tableware



care of  
your life

[www.aurora-tm.eu](http://www.aurora-tm.eu)

# 2000

## BRAND BIRTH

This event occurred at the edge of the millennium. The founder of the brand AURORA was a native of the countries of the former USSR, a young and energetic man who dreamed of improving the lives of his compatriots and giving them the opportunity to use high-quality household appliances. During this period, the concept of the brand, its mission and goals were formed. The brand name was chosen in honour of the goddess of the morning dawn, and the main logo symbolizing the sail – it is the desire to move towards the light and the beginning of a new day, and the people's hopes for the better.

# 2002

## START OF PRODUCTION

First models of small household appliances from the AURORA brand, a vacuum cleaner and a multicooker, were put into production as household items of the highest demand at that time. This was the beginning of the production of a wide range of small household appliances under the brand AURORA. Today, in the lineup, there are both products with exclusive design and content, produced specifically for each market, and the mass-market category.

# 2006

## COOKWARE PRODUCTION

It was decided to produce a line of dishes and kitchenware, which allowed the brand to strengthen its position, and consumers were given the opportunity to discover new brand advantages. Thanks to the start of crockery production, the brand was able to increase the number of covered segments in the sales markets and expand the geography of sales.

# 2013

## NEW MODERN STRUCTURE

The crisis in the global markets of 2008-2012 has not only caused a considerable reestablishing of both organizational structure and product line of the company, but also initiated the rebranding process. Forming a modern structure of the company made it possible to open and develop divisions around the world: production is in China and international trade and design development departments are in Canada. We also have initiated preparations for the opening of warehouses and representative offices in the European Union.

# 2016

## ENTERING THE EUROPEAN MARKET

AURORA trademark received official recognition in the European Union market - the products received CE conformity certificates. This was the impetus for entering the European market and marked the initiation of work with European partners as well as opening of warehouses and partner offices in the Europe.

# 2017

## ENTRY TO THE MARKETS OF THE FORMER USSR COUNTRIES

After a successful start of sales in the EU market, it was decided to enter the markets of the former Soviet Union. AURORA products have been certified in accordance with the requirements of the Customs Union, Ukraine and individual regional standards. AURORA appliances and crockery are sold in the markets of Russia, Ukraine, Belarus, Moldova, Georgia and Azerbaijan.

# 2019

## KEEPING UP WITH TIME

The most significant events of this year can be considered the technological renewal of the brand, which implies not only the release of new modern product lines, but also the launch of B2B portal for customers; updated site design, and preparation for work with the world's largest Internet sites. As a result, AURORA technology has successfully started on such sites as Amazon and eBay.

care of  
your life

## ↘ brand name

The brand name was chosen in honour of the goddess of the morning dawn, and the main logo symbolizing the sail – it is the desire to move towards the light and the beginning of a new day, and the people's hopes for the better.



## ↘ our mission

AURORA's brand Mission is to give everyone the opportunity to enjoy life, spend more time with their family, loved ones and friends, spend time on their hobbies, and AURORA will take care of home and kitchen.

## ↘ our customers' needs

All the appliances we produce are designed to meet the needs of our customers, and as the needs grow, we offer more and more innovative products. We follow the novelties of the market, demand in every sphere of our life and we try to satisfy every need as quickly as possible.

## ↘ utility. ecology. safety. accessibility

Therefore, each new AURORA product is developed and researched from all points of view – utility, ecology, safety, accessibility for all social layers. Focusing on the consumer is an integral part of the AURORA development strategy.



## 1 kitchen appliances

HOT DRINKS

PROCESSING OF PRODUCTS

HEAT TREATMENT OF PRODUCTS

KITCHEN SCALES



## 2 home appliances

CLOTHING CARE

CLIMATE TECHNIQS

## 3 health & beauty

PERSONAL SCALES

CARE FOR MEN

CARE FOR WOMEN

## 4 tableware

FOOD PREPARATION

HOT DRINKS

FOOD PROCESSING



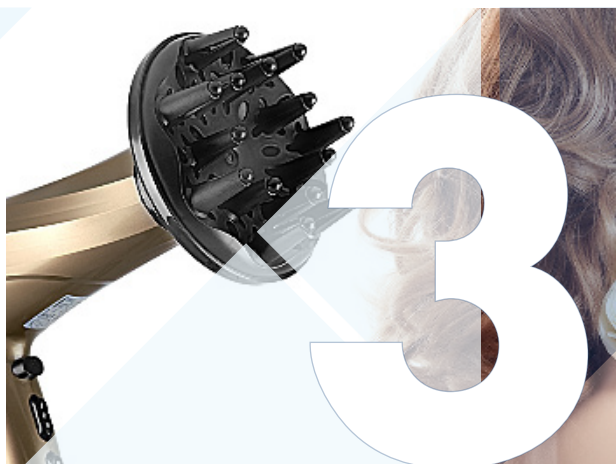


electric kettles	4-8
electric coffee makers	9-10
electric coffee grinders	11
electric stand blenders	12
electric hand blenders	13
electric hand mixers	14-15
electronic kitchen scales	16
electric meat grinders	17

electric juice extractors	18
electric multicookers	19
electric microwave ovens	20
electric induction cookers	20
electric toasters	21
electric grill presses	22
electric sandwich makers	22
electric food dehydrators	23



electric steam irons	24-26
electric garment steamers	26
electric stand fans	27
electric fan heaters	27



electric trimmers	28
electric hair clippers	29-30
electric shavers	30-31
electronic personal scales	32-33
electric hair dryers	34-35
electric stylers	36-37

kitchen knives sets	38-41
knives	42
kitchen tools	43
kettles	44
casseroles	45
graters	46

“ A CUP OF TEA  
is a cup of  
PEACE ”

*Soshitsu Sen XV*



**AU 182** Electric kettle

Body material: stainless steel  
Maximum volume is 1.7 liters  
Connection to the network via stand  
Cord storage compartment  
Automatic switch off  
Power: 1850–2200 Watt



Convenient lid opening



Power button with indicator light



## AU 183 Electric kettle



360° rotation of the kettle

**NEW**



Body material: stainless steel  
Maximum volume is 1.7 liters  
Connection to the network via stand  
Cord storage compartment  
Automatic switch off  
Power: 1850–2200 Watt

## AU 016 Electric kettle



360° rotation of the kettle

**NEW**



Body material: stainless steel  
Maximum volume is 1.7 liters  
Connection to the network via stand  
Cord storage compartment  
Automatic switch off  
Power: 1850–2200 Watt

## AU 3336 Electric kettle



Lid opening button  
and power button



Body material: stainless steel  
Maximum volume is 1.7 liters  
Connection to the network via stand  
Cord storage compartment  
Automatic switch off  
Power: 1850–2200 Watt

## AU 3512 Electric kettle



Lid opening button  
and power button



Body material: stainless steel  
Maximum volume is 1.7 liters  
Connection to the network via stand  
Cord storage compartment  
Automatic switch off  
Power: 1850–2200 Watt

## AU 3513 Electric kettle

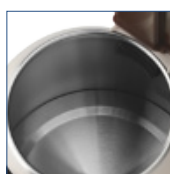


Convenient lid opening



Body material: stainless steel  
Maximum volume is 1.7 liters  
Connection to the network via stand  
Cord storage compartment  
Automatic switch off  
Power: 1850–2200 Watt

## AU 3402 Electric kettle



Inner part of the body:  
stainless steel



Body material: stainless steel/plastic  
Maximum volume is 1.7 liters  
Connection to the network via stand  
Cord storage compartment  
Automatic switch off  
Power: 1850–2200 Watt

## AU 336 Electric kettle



Power button  
with indicator light

**NEW**



Body material: stainless steel/plastic  
Maximum volume is 1.8 liters  
Connection to the network via stand  
Cord storage compartment  
Automatic switch off  
Power: 1500–1750 Watt

## AU 337 Electric kettle



Inner part of the body:  
stainless steel

**NEW**



Body material: stainless steel/plastic  
Maximum volume is 1.8 liters  
Connection to the network via stand  
Cord storage compartment  
Automatic switch off  
Power: 1500–1750 Watt

## AU 3016 Electric kettle



Lid opening button and power button

**NEW**



Body material: stainless steel/plastic  
Maximum volume is 1.8 liters  
Connection to the network via stand  
Cord storage compartment  
Automatic switch off  
Power: 1500–1750 Watt

## AU 3017 Electric kettle



Inner part of the body: stainless steel

**NEW**



Body material: stainless steel/plastic  
Maximum volume is 1.8 liters  
Connection to the network via stand  
Cord storage compartment  
Automatic switch off  
Power: 1500–1750 Watt

## AU 3334 Electric kettle



360° rotation of the kettle



Body material: plastic  
Maximum volume is 1.8 liters  
Connection to the network via stand  
Cord storage compartment  
Automatic switch off  
Power: 1850–2200 Watt

## AU 3506 Electric kettle



360° rotation of the kettle



Body material: plastic  
Maximum volume is 1.7 liters  
Connection to the network via stand  
Cord storage compartment  
Automatic switch off  
Power: 1850–2200 Watt

## AU 3504 Electric kettle



Convenient lid opening



Body material: plastic  
Maximum volume is 1.7 liters  
Connection to the network via stand  
Cord storage compartment  
Automatic switch off  
Power: 1850–2200 Watt

## AU 3509 Electric kettle



360° rotation of the kettle



Body material: plastic  
Maximum volume is 1.7 liters  
Connection to the network via stand  
Cord storage compartment  
Automatic switch off  
Power: 1850–2200 Watt

## AU 338 Electric kettle



Convenient lid opening

**NEW**



Body material: plastic  
Maximum volume is 2.0 liters  
Connection to the network via stand  
Cord storage compartment  
Automatic switch off  
Power: 1500–1750 Watt

## AU 339 Electric kettle



Lid opening button and power button

**NEW**



Body material: plastic  
Maximum volume is 2.0 liters  
Connection to the network via stand  
Cord storage compartment  
Automatic switch off  
Power: 1500–1750 Watt

## AU 3018 Electric kettle



Convenient lid opening

**NEW**



Body material: plastic  
Maximum volume is 1.8 liters  
Connection to the network via stand  
Cord storage compartment  
Automatic switch off  
Power: 1500–1750 Watt

## AU 3010 Electric kettle



360° rotation of the kettle



Body material: plastic  
Maximum volume is 1.8 liters  
Connection to the network via stand  
Cord storage compartment  
Automatic switch off  
Power: 1500–1750 Watt

## AU 3411 Electric kettle



Removable water filter



Body material: plastic  
Maximum volume is 1.0 liters  
Connection to the network via stand  
Cord storage compartment  
Automatic switch off  
Power: 900–1100 Watt

## AU 3507 Electric kettle



Lid opening button and power button



Body material: heat-resistant glass  
Maximum volume is 1.8 liters  
Connection to the network via stand  
Cord storage compartment  
Automatic switch off  
Power: 1850–2200 Watt

## AU 180 Electric kettle



Removable water filter



Body material: heat-resistant glass  
Maximum volume is 1.7 liters  
Connection to the network via stand  
Cord storage compartment  
Automatic switch off  
Power: 1850–2200 Watt

## AU 3505 Electric kettle



Convenient lid opening



Body material: heat-resistant glass  
Maximum volume is 1.7 liters  
Connection to the network via stand  
Cord storage compartment  
Automatic switch off  
Power: 1850–2200 Watt

## AU 3415 Electric kettle



360° rotation of the kettle



Body material: heat-resistant glass  
Maximum volume is 1.8 liters  
Connection to the network via stand  
Cord storage compartment  
Automatic switch off  
Power: 1850–2200 Watt

## AU 3414 Electric kettle



Lid opening button and power button



Body material: heat-resistant glass  
Maximum volume is 1.7 liters  
Connection to the network via stand  
Cord storage compartment  
Automatic switch off  
Power: 1850–2200 Watt



## AU 3330 Electric kettle



Removable water filter



Body material: heat-resistant glass  
Maximum volume is 1.7 liters  
Connection to the network via stand  
Cord storage compartment  
Automatic switch off  
Power: 1850–2200 Watt

## AU 3518 Electric kettle

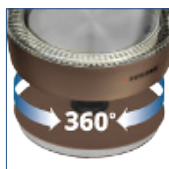


Lid opening button and power button



Body material: heat-resistant glass  
Maximum volume is 1.8 liters  
Connection to the network via stand  
Cord storage compartment  
Automatic switch off  
Power: 1850–2200 Watt

## AU 3331 Electric kettle



360° rotation of the kettle



Body material: heat-resistant glass  
Maximum volume is 1.7 liters  
Connection to the network via stand  
Cord storage compartment  
Automatic switch off  
Power: 1850–2200 Watt

## AU 3015 Electric kettle



Convenient lid opening

**NEW**



Body material: heat-resistant glass  
Maximum volume is 1.8 liters  
Connection to the network via stand  
Cord storage compartment  
Automatic switch off  
Power: 1500–1750 Watt

## AU 3014 Electric kettle



Power button

**NEW**



Body material: heat-resistant glass  
Maximum volume is 1.8 liters  
Connection to the network via stand  
Cord storage compartment  
Automatic switch off  
Power: 1500–1750 Watt



## AU 414 Electric coffee maker

Type: espresso  
Maximum volume is 1.6 liters  
Steam pressure: 1.5 bar  
Nozzle for supplying steam under pressure  
Detachable filter holder  
Removable drip tray  
Indication of work  
Measuring spoon-sealer: 10 g  
Power: 850 Watt



“ YOU CAN DO  
anything for coffee,  
EVEN GO TO WORK ”

*Bill Gates*



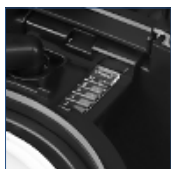
Cappuccino



1.6 liters removable transparent  
water tank



## AU 3141 Electric coffee maker



Up to 10 cups  
of aromatic coffee



Removable reusable filter  
for ground coffee

**NEW**



Type: drip  
Volume: 1.25 l  
Permanent filter  
Coffee preheating  
Indication of work  
Water level indicator  
Max. Power: 1000 Watt

## AU 3142 Electric coffee maker



up to 10 cups of aromatic  
coffee



Removable reusable filter  
for ground coffee

**NEW**



Type: drip  
Volume: 1.25 l  
Permanent filter  
Coffee preheating  
Indication of work  
Water level indicator  
Max. Power: 1000 Watt

## AU 142 Electric coffee maker



Cappuccino



Type: espresso  
Cappuccino  
Volume of the flask: 2-4 cups  
Steam pressure: 4 bar  
Nozzle for supplying steam under pressure  
Removable drip tray  
Measuring spoon-sealer: 10 g  
Max. Power: 800 Watt

## AU 415 Electric coffee maker



Cappuccino



Type: espresso  
Cappuccino  
Volume of the flask: 2-4 cups  
Steam pressure: 4 bar  
Nozzle for supplying steam under pressure  
Removable drip tray  
Measuring spoon-sealer: 10 g  
Max. Power: 800 Watt

## AU 3140 Electric coffee maker



Permanent filter



Type: espresso  
Two 125 ml cups  
Permanent filter  
Indication of work  
Max. Power: 450 Watt







## ➤ AU 349 Electric coffee grinder



Adjusting the degree of grinding

Housing material: plastic  
Adjusting the degree of grinding  
Method of grinding: millstone  
Pulse mode  
Protection against accidental activation  
Bowl of coffee grinder 120 g  
Container for ground coffee for 12 cups  
Power: 100 Watt



## ➤ AU 346 Electric coffee grinder



Material of the knife for grinding coffee beans: stainless steel

The possibility of grinding coffee beans, spices, preparing cocktails  
Protection against accidental activation  
Method of grinding: knives  
Housing material: metal  
Material of the knife for grinding coffee beans: stainless steel  
Removable bowl blender: 70 g  
Removable bowl coffee grinder: 70 g  
Power: 200 Watt



“ THE FRESH SMELL OF COFFEE  
soon wafted through the apartment,  
the smell that separates  
NIGHT FROM DAY ”

*Haruki Murakami*



AU 3443



AU 147



AU 146

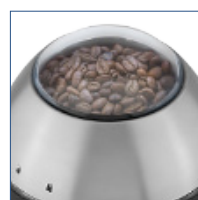


AU 348



AU 3442

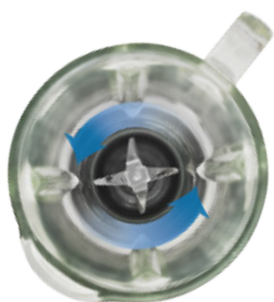
Housing material: combined (metal/plastic)  
Adjusting the degree of grinding  
Method of grinding: knives  
Work only when the lid is closed  
Pulse mode  
Protection against accidental activation  
Container capacity for coffee: 50-75 g  
Power: 150 Watt



Transparent cover to control the grinding process of grains



Material of the knife for grinding coffee beans: stainless steel



Sharp knife made of high quality stainless steel



#### ▶ AU 3119 Electric stand blender

Bowl capacity: 1.5 liter  
Two high-speed operation modes  
Pulse mode  
Glass bowl  
Cutting knife material: stainless steel  
Power: 500 Watt



Ability to add fluid during the work process



#### ▶ AU 3655 Electric stand blender

Bowl capacity: 1.5 liter  
Two high-speed operation modes  
Pulse mode  
Glass bowl  
Cutting knife material: stainless steel  
Power: 500 Watt

“ LET FOOD BE THY  
MEDICINE  
and medicine be  
THY FOOD ”

*Hippocrates*



## AU 3650 Electric hand blender



Blender knife



Mash knife

High-speed processing modes: 2  
Smooth speed control  
Turbo mode  
Blender nozzle  
Whisk nozzle  
Nozzle for mashed potatoes  
Chopper bowl capacity: 500 ml  
Measuring cup capacity: 800 ml  
Max. power: 1000 Watt



## AU 3352 Electric hand blender



Blender knife

High-speed processing modes: 2  
Smooth speed control  
Turbo mode  
LED-display  
Blender nozzle  
Whisk nozzle  
Chopper bowl capacity: 500 ml  
Measuring cup capacity: 800 ml  
Max. power: 1000 Watt



## AU 3651 Electric hand blender



Blender knife

High-speed processing modes: 2  
Turbo mode  
Blender nozzle  
Whisk nozzle  
Chopper bowl capacity: 300 ml  
Measuring cup capacity: 600 ml  
Max. power: 500 Watt



## AU 3660 Electric hand blender



Blender knife

High-speed processing modes: 1  
Blender nozzle  
Whisk nozzle  
Chopper bowl capacity: 600 ml  
Max. power: 350 Watt



## AU 3659 Electric hand blender



Blender knife

High-speed processing modes: 1  
Blender nozzle  
Whisk nozzle  
Chopper bowl capacity: 300 ml  
Max. power: 350 Watt



## AU 3654 Electric hand blender



Blender knife

High-speed processing modes: 2  
Blender nozzle  
Max. power: 600 Watt



## AU 3652 Electric hand blender



Blender knife

High-speed processing modes: 2  
Turbo mode  
Blender nozzle  
Max. power: 500 Watt



## AU 3656 Electric hand blender



Blender knife

High-speed processing modes: 1  
Blender nozzle  
Max. power: 250 Watt



“FOOD  
makes people happy,  
it takes you  
BACK HOME,  
it says so many things  
THAT WORDS  
CAN'T SAY”

*Sophia Loren*



Speed control

#### AU 4094

Speeds: 5  
«Turbo» mode  
Two whisks for whipping  
Two kneading doughs nozzles  
Max. power: 500 Watt

## AU 4090 Electric hand mixer



Speed control

Speeds: 5  
«Turbo» mode  
Two whisks for whipping  
Two kneading doughs nozzles  
Max. power: 500 Watt



## AU 4096 Electric hand mixer



Speed control

Speeds: 5  
«Turbo» mode  
Two whisks for whipping  
Two kneading doughs nozzles  
Max. power: 350 Watt



## AU 409 Electric hand mixer



Speed control

Speeds: 5  
«Turbo» mode  
Two whisks for whipping  
Two kneading doughs nozzles  
Max. power: 350 Watt



## AU 408 Electric hand mixer



Speed control

Speeds: 7  
Two whisks for whipping  
Two kneading doughs nozzles  
Max. power: 250 Watt



## AU 4091 Electric hand mixer



Speed control

Speeds: 7  
Two whisks for whipping  
Two kneading doughs nozzles  
Max. power: 250 Watt



## AU 4092 Electric hand mixer



Speed control

Speeds: 7  
Two whisks for whipping  
Two kneading doughs nozzles  
Max. power: 250 Watt



## AU 4093 Electric hand mixer



Speed control

Speeds: 7  
Two whisks for whipping  
Two kneading doughs nozzles  
Max. power: 250 Watt





➤ AU 4302 Kitchen scales

15<sup>max</sup>  
KG



Max. weight: 15 kg  
Change the measure units  
Value of division: 1 g  
Power element 2xAAA

➤ AU 4320 Kitchen scales

5<sup>max</sup>  
KG

NEW



Max. weight: 5 kg  
Change the measure units  
Value of division: 1 g  
Power element 1xCR2032

➤ AU 4300/4301/4303/4304 Kitchen scales

5<sup>max</sup>  
KG

Max. weight: 5 kg  
Change the measure units  
Value of division: 1 g  
Power element 1xCR2032



“ EVERYTHING  
IN LIFE  
has weight,  
but not everything  
IS WEIGHTED ”

*Leonid S. Sukhorukov*



“ THERE IS MEAT HERE!  
I decided —  
that I would  
LIVE HERE! ”

*Alice Baskerville. Pandora Hearts*



#### ➤ AU 3462 Electric meat grinder

Reverse function  
Attachment for cooking "Kebbe"  
Nozzle for homemade sausages  
Three kinds of grinding plates  
Productivity: up to 1.9 kg/min  
Max. power: 1200 Watt

#### ➤ AU 3461 Meat grinder with a screw juicer for soft vegetables, fruits and berries



Reverse function



Attachment for cooking "Kebbe"



Nozzle for homemade sausages



Two kinds of grinding plates



Reverse function  
Attachment for cooking "Kebbe"  
Nozzle for homemade sausages  
Two kinds of grinding plates  
The nozzle-juicer  
Cross-shaped knife made of stainless steel  
Productivity: up to 1.5 kg/min  
Max. power: 1000 Watt

#### ➤ AU 3463 Electric meat grinder



Reverse function

Reverse function  
Attachment for cooking "Kebbe"  
Nozzle for homemade sausages  
One grinding plate  
Cross-shaped knife made of stainless steel  
Productivity: up to 1.5 kg/min  
Max. power: 1000 Watt





“ DON'T BE ANGRY  
because vitamins  
are  
disappearing —  
CIPOLLINO ”

*Gianni Rodari*



Neck diameter: 75 mm



Neck diameter: 65 mm



#### ▶ AU 3341 Electric juice extractor

Speed processing modes: 2  
Centrifugal operation principle  
Pulse operation mode  
Neck diameter: 75 mm  
Material of filter float: stainless steel  
The volume of the pulp tank: 1.7 l  
The volume of the juice tank: 1.1 l  
Direct juice supply  
Power: 1500 Watt



#### ▶ AU 3343 Electric juice extractor

Speed processing modes: 2  
Centrifugal operation principle  
Neck diameter: 65 mm  
Material of filter float: stainless steel  
The volume of the pulp tank: 1.4 l  
The volume of the juice tank: 0.5 l  
Direct juice supply  
Power: 1000 Watt



## ► AU 3457 Multicooker



Safe use



Possibility of cooking delay up to 24 hours  
"Manual mode" program (possibility to adjust the cooking time)  
Heat maintaining  
Automatic cooking programs: 45  
Book of recipes  
Power: 700 Watt

## ► AU 252 Multicooker



The lid is made of a high-quality glass



Possibility of cooking delay up to 24 hours  
"Manual mode" program (possibility to adjust the cooking time)  
Heat maintaining  
Automatic cooking programs: 30  
Book of recipes  
Power: 700 Watt



Tray for steam cooking



Shoulder blade and ladle



Measuring cup

“ AFTER  
A GOOD DINNER  
one can forgive  
anybody, even one's  
OWN RELATIVES ”

Oscar Wilde



## AU 3682 Microwave oven

The volume of the chamber: 20 liters  
 Maximum cooking time: 60 min  
 Microwave power levels: 5  
 Automatic programs: 8  
 Multi-stage cooking  
 Express cooking  
 Defrosting mode  
 Delayed cooking start  
 Setting the time (clock)  
 Sound signal when finished  
 Child lock function  
 Diameter of the turntable tray: 245 mm  
 Power: 700 Watt  
 Max. power: 1150 Watt  
 Microwave frequency: 2450 MHz



The volume of the chamber:  
20 liters



## AU 3680 Microwave oven

The volume of the chamber: 20 liters  
 Maximum cooking time: 30 min  
 Microwave power levels: 5  
 Defrosting mode  
 Sound signal when finished  
 Diameter of the turntable tray: 245 mm  
 Grill rack  
 "Grill" function - suitable for roasting sausages,  
 chicken wings, slices of meat  
 Three combination modes of grilling:  
 C1 — suitable for chops frying, hot sandwiches; C2 — suitable for frying chicken  
 and small pieces of meat; C3 — suitable for toasting large pieces of meat, large poultry  
 Power: 700 Watt  
 Max. power: 1150 Watt  
 Microwave frequency: 2450 MHz



The volume of the chamber:  
20 liters



## AU 4472 Electric induction cooker

Hob material: ceramics  
 Diameter of the working surface: 170 mm  
 Auto power off (in the absence of dishes on the hob)  
 Timer  
 Max. power: 2000 Watt



## AU 4473 Electric induction cooker

The working surface is easy to clean (280x350 mm)  
 6 automatic cooking programs: «Hot Pot», «Fry», «Stir-Fry», «Soup», «Water», «Steam»  
 Auto power off (in the absence of dishes on the hob)  
 Timer  
 Lock function  
 Max. power: 2000 Watt

“ DELICIOUS BREAKFAST  
is a separate holiday  
IN LIFE ”

Haruki Murakami



#### ▶ AU 3324 Electric toaster

Toasting adjustment  
Cancel the toasting process by pressing  
the stop button  
Crumb tray  
Power: 750 Watt

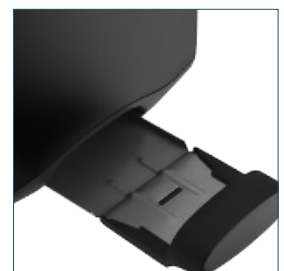


Crumb tray



#### ▶ AU 3323 Electric toaster

Defrost function  
Toasting adjustment  
Cancel the toasting process by pressing  
the stop button  
Crumb tray  
Power: 850 Watt



Crumb tray



## AU 3326 Electric grill press

Grill plates with non-stick coating  
 Overheat protection  
 Light work indicator  
 Side "barbecue" mode switch  
 The side switch allows you to open the plates by 180°  
 Temperature adjustment (maximum 200°C)  
 Power: 1800–2000 Watt



Side "barbecue" mode switch



Fluid drain



Grill attachments



Attachments for making waffles



Attachments for making sandwiches

## AU 326 Electric sandwich maker

Three pairs of removable attachments with non-stick coating are included in a set  
 Overheat protection  
 Light work indicator  
 Clamp-lock  
 Power: 700–800 Watt



Attachments for making sandwiches



Clamp-lock



## AU 327 Electric sandwich maker

A pair of attachments for sandwiches with non-stick coatings is included in a set  
 Overheat protection  
 Light work indicator  
 Clamp-lock  
 Power: 700–800 Watt





➤ AU 3371 Electric food dehydrator



Control type: electronic  
 Pallets for drying: 4  
 Overheat protection  
 Temperature adjustment 40-70°C  
 Number of temperature modes: 7  
 Timer up to 48 hours  
 LED display  
 Max. power: 520 Watt

➤ AU 3372 Electric food dehydrator



Control type: mechanical  
 Pallets for drying: 5  
 Overheat protection  
 Temperature adjustment 40-70°C  
 Drying system: convection  
 Max. power: 245 Watt

➤ AU 3370 Electric food dehydrator



Control type: mechanical  
 Pallets for drying: 5  
 Overheat protection  
 Temperature adjustment 30-70°C  
 Drying system: convection  
 Max. power: 520 Watt

“ I HAVE  
 THE SIMPLEST TASTES.  
 I am always satisfied  
 WITH THE BEST ”

*Oscar Wilde*

# “ TECHNICS COMES TO THE RESCUE OF any desire and any fear ”

*Gabriel (Honore) Marcel*

## ▶ AU 3164 Steam iron

Operating modes: dry ironing, steaming, vertical  
steaming  
Self-cleaning function  
Working surface: ceramic  
Power: 2300–2600 Watt



## ▶ AU 3423 Steam iron

Operating modes: dry ironing, steaming, vertical  
steaming  
Self-cleaning function  
Working surface: ceramic  
Anti-drip system  
Power: 2300–2600 Watt



## ▶ AU 3163 Steam iron

Operating modes: dry ironing, steaming, vertical  
steaming  
Self-cleaning function  
Working surface: ceramic  
Power: 2200–2500 Watt

**NEW**



## ▶ AU 3424 Steam iron

Operating modes: dry ironing, steaming, vertical  
steaming  
Self-cleaning function  
Working surface: ceramic  
Anti-drip system  
Power: 2200–2500 Watt





## AU 3151 Steam iron

Operating modes: dry ironing, steaming, vertical steaming  
Self-cleaning function  
Anti-CALC system  
Working surface: ceramic  
Anti-drip system  
Power: 2200–2500 Watt



## AU 3153 Steam iron

Operating modes: dry ironing, steaming, vertical steaming  
Self-cleaning function  
Anti-CALC system  
Working surface: ceramic  
Anti-drip system  
Power: 2200–2400 Watt



## AU 3152 Steam iron

Operating modes: dry ironing, steaming, vertical steaming  
Self-cleaning function  
Anti-CALC system  
Working surface: ceramic  
Anti-drip system  
Power: 2000 Watt



## AU 3150 Steam iron

Operating modes: dry ironing, steaming, vertical steaming  
Self-cleaning function  
Anti-CALC system  
Working surface: ceramic  
Anti-drip system  
Power: 2000–2300 Watt



## AU 3433 Steam iron

Operating modes: dry ironing, steaming, vertical steaming  
Self-cleaning function  
Working surface: ceramic  
Anti-drip system  
Power: 2000 Watt



## AU 3421 Steam iron

Operating modes: dry ironing, steaming, vertical steaming  
Self-cleaning function  
Anti-CALC system  
Working surface: ceramic  
Anti-drip system  
Power: 2000 Watt



## AU 3422 Steam iron

Operating modes: dry ironing, steaming, vertical steaming  
Self-cleaning function  
Working surface: non-stick surface  
Anti-drip system  
Power: 2000 Watt



## AU 3428 Steam iron

Operating modes: dry ironing, steaming, vertical steaming  
Self-cleaning function  
Working surface: ceramic  
Anti-drip system  
Power: 2000 Watt





## AU 3161 Steam iron

Operating modes: dry ironing, steaming, vertical steaming  
 Self-cleaning function  
 Anti-CALC system  
 Working surface: ceramic  
 Anti-drip system  
 Power: 2000 Watt



## AU 3162 Steam iron

Operating modes: dry ironing, steaming, vertical steaming  
 Self-cleaning function  
 Working surface: non-stick surface  
 Power: 1200-1600 Watt

**NEW**



Clamp for trousers



Volume of the water tank: 1.9 liter

## AU 324 Electric garment steamer

Vertical steaming  
 Overheat protection  
 Volume of the water tank: 1.9 liter  
 Foldable hanger  
 Telescopic stand  
 Clamp for trousers  
 Thermal mitt for ironing  
 Steam supply adjustment  
 Brush for removing lint  
 Power: 1700 Watt



“ YOUR HOME  
is where your thoughts  
ARE CALM ”  
*Confucius*



▮ AU 3070 / AU 3071 Electric stand fan

Diameter: 40 cm  
Height: 120 cm  
Base size: 45x45 cm  
3 speed settings  
10 ° vertical tilt, 90 ° horizontal rotation  
Height adjustment

▮ AU 066 Electric fan heater



Temperature and air flow  
adjustment

Heating area up to 15 m<sup>2</sup>  
Power adjustment  
Mode switch  
Overheat protection  
Light indication  
Ceramic heating element  
Tip over protection  
Fan mode  
Power: 1500 Watt



▮ AU 068 Electric fan heater



Temperature and air flow  
adjustment

Heating area up to 15 m<sup>2</sup>  
Power adjustment  
Mode switch  
Overheat protection  
Indicator light  
Fan mode  
Power: 1800–2000 Watt







## AU 3083 Hair clipper kit

Blades material: stainless steel  
 Universal nozzle size (12/14/16/18/20 mm)  
 Body trimmer; trimmer for nose and ears; shaving trimmer;  
 beard trimmer; hair cutting trimmer; precision trimmer  
 Accumulator working time: up to 60 min  
 Full charge time: 8 h  
 Mains and battery operation  
 Accessories: scissors, comb, cleaning brush,  
 oil for greasing blades, charger  
 Accumulator: 2x600 mAh



Smooth shave



Safe haircut



“ HAIRCUT IS MORE  
 than just a returning  
 TO THE PREVIOUS LOOK ”

*The pet girl of Sakurasou*



## AU 3084 Hair clipper set



Smooth shave, safe haircut



Blades material: stainless steel  
Two universal nozzles (size 3/6/9/12/15 mm;  
18/21/24/27/30 mm)  
Accumulator working time: up to 60 min  
Full charge time: 8 h  
Mains and battery operation  
Accessories: scissors, comb, cleaning brush,  
oil for greasing blades, charger  
Accumulator: 2x600 mAh

## AU 080 Hair clipper set



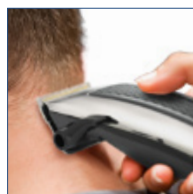
Safe haircut



Blades material: stainless steel  
Four nozzles (3/6/9/12 mm)  
Mains operation  
Low noise and vibration  
Accessories: scissors, comb, cleaning brush,  
oil for greasing blades, charger  
Power: 10 Watt

## AU 081 Hair clipper set

**NEW**



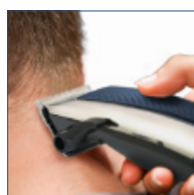
Safe haircut



Blade with titanium covering  
Four nozzles (3/6/9/12 mm)  
Mains operation  
Low noise and vibration  
Accessories: scissors, comb, cleaning brush,  
oil for greasing blades, charger  
Power: 10 Watt

## AU 082 Hair clipper set

**NEW**



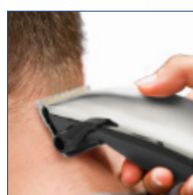
Safe haircut



Blades material: ceramics  
Four nozzles (3/6/9/12 mm)  
Mains operation  
Low noise and vibration  
Accessories: scissors, comb, cleaning brush,  
oil for greasing blades, charger  
Power: 10 Watt

## AU 083 Hair clipper set

**NEW**

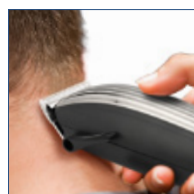


Safe haircut



Blade with titanium covering  
Four nozzles (3/6/9/12 mm)  
Mains operation  
Low noise and vibration  
Accessories: scissors, comb, cleaning brush,  
oil for greasing blades, charger  
Power: 10 Watt

## AU 3085 Hair clipper set



Safe haircut



Blades material: stainless steel  
Four nozzles (3/6/9/12 mm)  
Mains operation  
Low noise and vibration  
Accessories: scissors, comb, cleaning brush,  
oil for greasing blades, charger  
Power: 10 Watt

## AU 3086 Hair clipper set



Safe haircut



Blades material: stainless steel  
Four nozzles (3/6/9/12 mm)  
Mains operation  
Low noise and vibration  
Accessories: scissors, comb, cleaning brush,  
oil for greasing blades, charger  
Power: 10 Watt

## ➤ AU 3290 Hair clipper set



Safe haircut



Blades material: stainless steel  
Four nozzles (3/6/9/12 mm)  
Mains operation  
Low noise and vibration  
Accessories: scissors, comb, cleaning brush,  
oil for greasing blades, charger  
Power: 10 Watt

## ➤ AU 3291 Hair clipper set

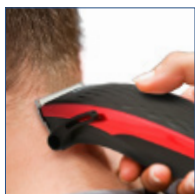


Safe haircut



Blades material: stainless steel  
Four nozzles (3/6/9/12 mm)  
Mains operation  
Low noise and vibration  
Accessories: scissors, comb, cleaning brush,  
oil for greasing blades, charger  
Power: 10 Watt

## ➤ AU 3292 Hair clipper set



Safe haircut



Blades material: ceramics  
Four nozzles (3/6/9/12 mm)  
Mains operation  
Low noise and vibration  
Accessories: scissors, comb, cleaning brush,  
oil for greasing blades, charger  
Power: 10 Watt

## ➤ AU 3293 Hair clipper set



Safe haircut



Blades material: stainless steel  
Four nozzles (3/6/9/12 mm)  
Mains operation  
Low noise and vibration  
Accessories: scissors, comb, cleaning brush,  
oil for greasing blades, charger  
Power: 10 Watt

## ➤ AU 3298 Hair clipper set



Safe haircut



Blades material: stainless steel  
Four nozzles (3/6/9/12 mm)  
Mains operation  
Low noise and vibration  
Accessories: scissors, comb, cleaning brush,  
oil for greasing blades, charger  
Power: 10 Watt

## ➤ AU 3546 Electric shaver



Smooth shave



Blades are made of high quality stainless steel  
Double blades system  
Accumulator working time: up to 60 min  
Full charge time: 8 h  
Folding trimmer

## ➤ AU 3544 Electric shaver



Smooth shave



Blades are made of high quality stainless steel  
Double blades system  
Accumulator working time: up to 60 min  
Full charge time: 8 h  
Folding trimmer  
Shaver cover: PU leather

## ➤ AU 3543 Electric shaver

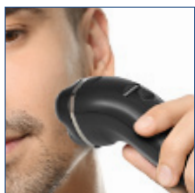


Smooth shave



Blades are made of high quality stainless steel  
Double blades system  
Accumulator working time: up to 60 min  
Full charge time: 8 h  
Folding trimmer

## ➤ AU 3540 Electric shaver



Smooth shave



Blades are made of high quality stainless steel  
Double blades system  
Accumulator working time: up to 60 min  
Full charge time: 8 h  
Folding trimmer

## ➤ AU 3542 Electric shaver

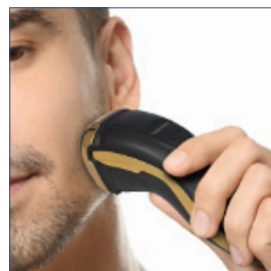


Smooth shave



Blades are made of high quality stainless steel  
Double blades system  
Accumulator working time: up to 60 min  
Full charge time: 8 h  
Folding trimmer

## ➤ AU 3545 Electric shaver



Smooth shave



Folding trimmer

Blades are made of high quality stainless steel  
Double blades system  
Accumulator working time: up to 90 min  
Full charge time: 8 h  
Wet cleaning of the shaving unit  
Folding trimmer  
Shaver cover: PU leather

“ PEOPLE  
who shave grow a day  
YOUNGER  
EVERY MORNING ”

Vladimir Nabokov





“ YOUR HEART IS WELL.  
Following a diet  
you will live  
A LONG  
AND HAPPY LIFE ”  
*How I met your mother*



#### ➤ AU 4312 Personal scales

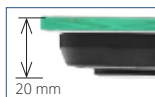
Working surface material: hardened glass  
Display type: liquid crystal  
Automatic deactivation  
Value of division: 100 g  
Maximum weight: 180 kg  
Diagnostics: adipose tissue content, muscular  
tissue, bone mass, fluid content  
Battery: 1PC (CR2032)

Calculation of fat, bone, muscular tissue and water content  
of the body in percentage

## AU 4313 Personal scales

Working surface material: hardened glass  
 Display type: liquid crystal  
 Automatic deactivation  
 Value of division: 100 g  
 Maximum weight: 150 kg  
 Battery: 1PC (CR2032)

**NEW**



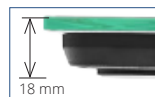
Scales does not take up much space and are convenient for storage

**150 max KG**



## AU 4305 Personal scales

Working surface material: hardened glass  
 Display type: liquid crystal  
 Automatic deactivation  
 Value of division: 100 g  
 Maximum weight: 150 kg  
 Battery: 1PC (CR2032)



Scales does not take up much space and are convenient for storage

**150 max KG**



## AU 4306 Personal scales

Working surface material: hardened glass  
 Display type: liquid crystal  
 Automatic deactivation  
 Value of division: 100 g  
 Maximum weight: 150 kg  
 Battery: 1PC (CR2032)



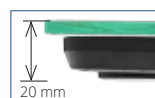
Scales does not take up much space and are convenient for storage

**150 max KG**



## AU 4307 Personal scales

Working surface material: hardened glass  
 Display type: liquid crystal  
 Automatic deactivation  
 Value of division: 100 g  
 Maximum weight: 150 kg  
 Battery: 1PC (CR2032)



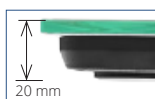
Scales does not take up much space and are convenient for storage

**150 max KG**



## AU 4308 Personal scales

Working surface material: hardened glass  
 Display type: liquid crystal  
 Automatic deactivation  
 Value of division: 100 g  
 Maximum weight: 150 kg  
 Battery: 1PC (CR2032)



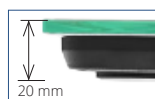
Scales does not take up much space and are convenient for storage

**150 max KG**



## AU 4310 Personal scales

Working surface material: hardened glass  
 Display type: liquid crystal  
 Automatic deactivation  
 Value of division: 100 g  
 Maximum weight: 150 kg  
 Battery: 1PC (CR2032)



Scales does not take up much space and are convenient for storage

**150 max KG**



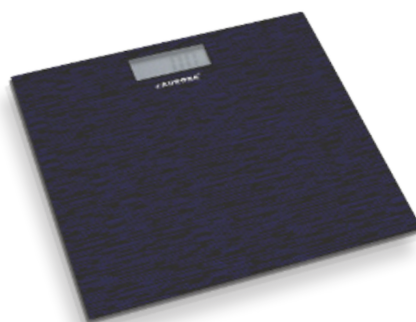
## AU 4311 Personal scales

Working surface material: hardened glass  
 Display type: liquid crystal  
 Automatic deactivation  
 Value of division: 100 g  
 Maximum weight: 150 kg  
 Battery: 1PC (CR2032)



Scales does not take up much space and are convenient for storage

**150 max KG**







“ BEAUTY IS THE PROMISE  
of happiness ”

*Stendhal*

#### ▶ AU 3523 Hair dryer



Creating the necessary  
styling and fixing

Cold air supply  
Concentrator nozzle  
Diffuser nozzle  
Speed modes: 2  
Temperature modes: 3  
Tourmaline ionization  
Power: 1800–2200 Watt



Removable air intake filter

#### ▶ AU 3528 Hair dryer

Cold air supply  
Concentrator nozzle  
Diffuser nozzle  
Speed modes: 2  
Temperature modes: 3  
Tourmaline ionization  
Power: 2000–2400 Watt

#### ▶ AU 3524 Hair dryer



Creating the necessary  
styling and fixing

Cold air supply  
Concentrator nozzle  
Diffuser nozzle  
Speed modes: 2  
Temperature modes: 3  
Tourmaline ionization  
Power: 1800–2200 Watt

#### ▶ AU 3530 Hair dryer



Creating the necessary  
styling and fixing

Cold air supply  
Concentrator nozzle  
Diffuser nozzle  
Speed modes: 2  
Temperature modes: 3  
Tourmaline ionization  
Power: 1800–2200 Watt



## AU 3532 Hair dryer



Creating the necessary styling and fixing

Cold air supply  
Concentrator nozzle  
Diffuser nozzle  
Speed modes: 2  
Temperature modes: 3  
Tourmaline ionization  
Power: 1800–2200 Watt

## AU 3529 Hair dryer



Creating the necessary styling and fixing

Cold air supply  
Concentrator nozzle  
Diffuser nozzle  
Speed modes: 2  
Temperature modes: 3  
Tourmaline ionization  
Power: 1800–2200 Watt

## AU 3533 Hair dryer



Creating the necessary styling and fixing

Cold air supply  
Concentrator nozzle  
Diffuser nozzle  
Speed modes: 2  
Temperature modes: 3  
Tourmaline ionization  
Power: 1800–2200 Watt

## AU 3531 Hair dryer



Creating the necessary styling and fixing

Cold air supply  
Concentrator nozzle  
Diffuser nozzle  
Speed modes: 2  
Temperature modes: 3  
Tourmaline ionization  
Power: 2000–2200 Watt

## AU 3526 Hair dryer



Creating the necessary styling and fixing

Cold air supply  
Concentrator nozzle  
Diffuser nozzle  
Speed modes: 2  
Temperature modes: 3  
Tourmaline ionization  
Power: 1800–2000 Watt

## AU 3201 Hair dryer



Folding handle

NEW

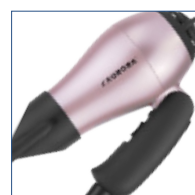
Speed modes: 2  
Temperature modes: 1  
Folding handle  
Power: 1100–1300 Watt

## AU 3536 Hair dryer



Speed modes: 2  
Temperature modes: 1  
Folding handle  
Accessories: storage bag, hair brush, hair comb  
Power: 1100–1200 Watt

## AU 3200 Hair dryer



Folding handle

NEW

Speed modes: 2  
Temperature modes: 1  
Folding handle  
Max. power: 1000 Watt

“ UNTIL YOU GAVE UP  
ON YOURSELF,  
until you fell —  
YOU ARE ALIVE.  
Death for a woman  
begins with her  
UNCURLED HAIR and  
WRINKLED DRESS ”

*Reflections of Eterna (Vera Kamsha)*



Ceramic coating of nozzles



#### ▶ AU 3579 Multistylers

Interchangeable attachments: conical forceps with a diameter of 16-25 mm; plates for straightening in the size 29x80 mm; nozzle for curls  
Heating temperature: 210° (±15°) C  
Light indicator of operation  
Ceramic coating  
Removable attachments  
Power: 25-45 Watt



## ➤ AU 3578 Electric hair brush curler



Perfect styling

Heating temperature: 180° (±15°) C  
Light indicator of operation  
Ceramic coating  
Unheated tip  
360° cord rotation  
Power: 25 Watt



## ➤ AU 3576 Electric hair conical curler



Perfect curling

Heating temperature: 200° (±15°) C  
Light indicator of operation  
Ceramic coating  
Diameter of the working surface: 16-25 mm  
Unheated tip  
360° cord rotation  
Power: 30 Watt



## ➤ AU 3577 Electric hair curler



Perfect curling

Heating temperature: 200° (±15°) C  
Light indicator of operation  
Ceramic coating  
Diameter of the working surface: 19 mm  
Unheated tip  
360° cord rotation  
Power: 25 Watt



## ➤ AU 3571 Electric hair curler



Perfect curling

Heating temperature: 200° (±15°) C  
Light indicator of operation  
Ceramic coating  
Diameter of the working surface: 19 mm  
Unheated tip  
360° cord rotation  
Power: 25 Watt



## ➤ AU 3572 Electric hair curler



Perfect curling

Heating temperature: 200° (±15°) C  
Light indicator of operation  
Ceramic coating  
Diameter of the working surface: 9 mm  
Unheated tip  
360° cord rotation  
Power: 25 Watt



## ➤ AU 3573 Electric hair conical curler

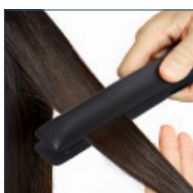


Perfect curling

Heating temperature: 200° (±15°) C  
Light indicator of operation  
Ceramic coating  
Diameter of the working surface: 16-25 mm  
Unheated tip  
360° cord rotation  
Power: 30 Watt



## ➤ AU 3273 Electric hair straightener

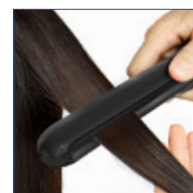


Perfect straightening

Heating temperature: 200° (±15°) C  
Light indicator of operation  
Ceramic coating  
Plates for straightening in the size: 100x26 mm  
Unheated tip  
360° cord rotation  
Power: 30 Watt



## ➤ AU 3274 Electric hair straightener



Perfect straightening

Heating temperature: 200° (±15°) C  
Light indicator of operation  
Ceramic coating  
Plates for straightening in the size: 86x22 mm  
Unheated tip  
360° cord rotation  
Power: 30 Watt





# “ THE KNIFE does not cut OWN HANDLE ”

*Persian proverbs and sayings*



Chef knife



Bread knife



Slicer knife



Fillet knife



Utility knife



Paring knife



Sharpener



Scissors



## ▼ AU 860 Knife set

Knives are made of quality stainless steel

Chef knife 20 cm (8")  
Bread knife 20 cm (8")  
Slicer knife 20 cm (8")  
Fillet knife 15 cm (6")  
Utility knife 13 cm (5")  
Paring knife 9 cm (3.5")  
Sharpener 20 cm (8")  
Scissors 10 cm (4")



"SOFT-TOUCH"  
handle



The blades of the knives  
are made of high-quality stainless steel  
with "non-stick" coating

#### ▶ AU 861 Knife set

Knives are made of quality stainless steel  
Chef knife 20 cm (8")  
Bread knife 20 cm (8")  
Slicer knife 20 cm (8")  
Utility knife 13 cm (5")  
Paring knife 9 cm (3.5")



"SOFT-TOUCH"  
handle



The blades of the knives are made  
of high-quality stainless steel

#### ▶ AU 864 Knife set

Knives are made of quality stainless steel  
Chef knife 20 cm (8")  
Bread knife 20 cm (8")  
Slicer knife 20 cm (8")  
Utility knife 13 cm (5")  
Paring knife 9 cm (3.5")  
Scissors 10 cm (4")







Ergonomic handle



The blades of the knives are made of high-quality stainless steel with "non-stick" coating

#### ➤ AU 862 Knife set

Knives are made of quality stainless steel  
 Chef knife 20 cm (8")  
 Bread knife 20 cm (8")  
 Slicer knife 20 cm (8")  
 Utility knife 13 cm (5")  
 Paring knife 9 cm (3.5")



Ergonomic handle



The blades of the knives are made of high-quality stainless steel with "non-stick" coating

#### ➤ AU 863 Knife set

Knives are made of quality stainless steel  
 Chef knife 20 cm (8")  
 Bread knife 20 cm (8")  
 Slicer knife 20 cm (8")  
 Utility knife 13 cm (5")  
 Paring knife 9 cm (3.5")







Ergonomic handle



The blades of the knives are made of high-quality stainless steel

## AU 865 Knife set

Knives are made of quality stainless steel  
 Chef knife 20 cm (8")  
 Bread knife 20 cm (8")  
 Slicer knife 20 cm (8")  
 Utility knife 13 cm (5")  
 Paring knife 9 cm (3.5")



Ergonomic handle



The blades of the knives are made of high-quality stainless steel with "non-stick" coating

## AU 866 Knife set

Knives are made of quality stainless steel  
 Chef knife 20 cm (8")  
 Bread knife 20 cm (8")  
 Slicer knife 20 cm (8")  
 Utility knife 13 cm (5")  
 Paring knife 9 cm (3.5")





The blades of the knives are made of high-quality stainless steel

## Knives

Knives are made of quality stainless steel  
 Chef knife 20 cm (8")  
 Bread knife 20 cm (8")  
 Slicer knife 20 cm (8")  
 Utility knife 13 cm (5")  
 Paring knife 9 cm (3.5")



AU890 Chef knife



AU891 Bread knife



AU892 Slicer knife



AU893 Utility knife



AU894 Paring knife



The blades of the knives are made of high-quality stainless steel with "non-stick" coating

## Knives

Knives are made of quality stainless steel  
 Chef knife 20 cm (8")  
 Bread knife 20 cm (8")  
 Slicer knife 20 cm (8")  
 Utility knife 13 cm (5")  
 Paring knife 9 cm (3.5")



AU895 Chef knife



AU896 Bread knife



AU897 Slicer knife



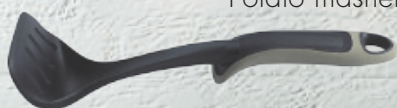
AU898 Utility knife



AU899 Paring knife



Soup ladle



Potato masher



Shovel



Skimmer



Whisk



#### ➤ AU 691 Kitchen tools set

Soup ladle, potato masher, shovel, skimmer, whisk, holder  
"SOFT-TOUCH" handle  
The ability to use at temperature up to 200°C

#### ➤ AU 692 Kitchen tools set

Soup ladle, potato masher, shovel, skimmer, whisk, kitchen tongs, holder  
Set is made of stainless steel  
The ability to use at temperature up to 200°C



#### ➤ AU 690 Kitchen tools set

Soup ladle, potato masher, shovel, skimmer, whisk, holder  
"SOFT-TOUCH" handle  
The ability to use at temperature up to 200°C



“ ...DID YOU HEAR  
my whistle?  
come and take care  
OF ME! ”  
*Donald Norman*

▼ AU 620 Kettle with whistle



Volume: 2.0 liters  
Possibility to use on: electric plate;  
electric induction plate; gas plate;  
electric halogen plate;  
electric glassceramic plate

▼ AU 619 Kettle with whistle



Volume: 2.5 liters  
Possibility to use on: electric plate;  
electric induction plate; gas plate;  
electric halogen plate;  
electric glassceramic plate

▼ AU 618 Kettle with whistle



Volume: 3.0 liters  
Possibility to use on: electric plate;  
electric induction plate; gas plate;  
electric halogen plate;  
electric glassceramic plate

▼ AU 624 Kettle with whistle

**NEW**



Volume: 3.0 liters  
Possibility to use on: electric plate;  
electric induction plate; gas plate;  
electric halogen plate;  
electric glassceramic plate

▼ AU 626 Kettle with whistle

**NEW**



Volume: 3.0 liters  
Possibility to use on: electric plate;  
electric induction plate; gas plate;  
electric halogen plate;  
electric glassceramic plate

### ▶ AU 5585 Casserole with lid

6.0 liters: height – 13.5 cm, diameter – 24 cm  
Lid material: glass  
Possibility to use on: electric plate; gas plate; induction cooker;  
halogen plate; glass ceramic plate



### ▶ AU 5584 Casserole with lid

3.8 liters: height – 11.5 cm, diameter – 20 cm  
Lid material: glass  
Possibility to use on: electric plate;  
gas plate; induction cooker; halogen plate; glass ceramic plate



### ▶ AU 5583 Casserole with lid

2.8 liters: height – 10.5 cm, diameter – 18 cm  
Lid material: glass  
Possibility to use on: electric plate; gas plate; induction cooker;  
halogen plate; glass ceramic plate



### ▶ AU 5582 Casserole with lid

2.0 liters: height – 9.5 cm, diameter – 16 cm  
Lid material: glass  
Possibility to use on: electric plate;  
gas plate; induction cooker; halogen plate; glass ceramic plate



### ▶ AU 5581 Saucepan with lid

2.8 liters: height – 10.5 cm, diameter – 18 cm  
Lid material: glass  
Possibility to use on: electric plate; gas plate; induction cooker;  
halogen plate; glass ceramic plate



### ▶ AU 5580 Saucepan with lid

2.0 liters: height – 9.5 cm, diameter – 16 cm  
Lid material: glass  
Possibility to use on: electric plate;  
gas plate; induction cooker; halogen plate; glass ceramic plate





## AU 1091 Grater

Cutting surfaces: 6  
Material: stainless steel/plastic

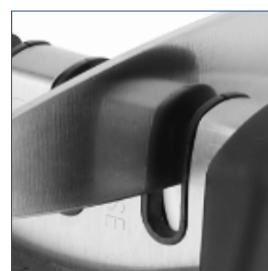


## AU 1090 Grater

Cutting surfaces: 4  
Material: stainless steel



Easy to fold and clean



For all types of knives

## AU 1302 Sharpener for knives

Sharpening (type): manual  
For all types of knives





↙ notes

---

---

---

---

---

---

---

---





AURORA CEE Holding s.r.o.

Praha, Czech Republic

[office@aurora-tm.eu](mailto:office@aurora-tm.eu)

[www.aurora-tm.eu](http://www.aurora-tm.eu)